



RZR 1000 Control Box Installation

Before you begin, please read all the instructions below and check kit contents.

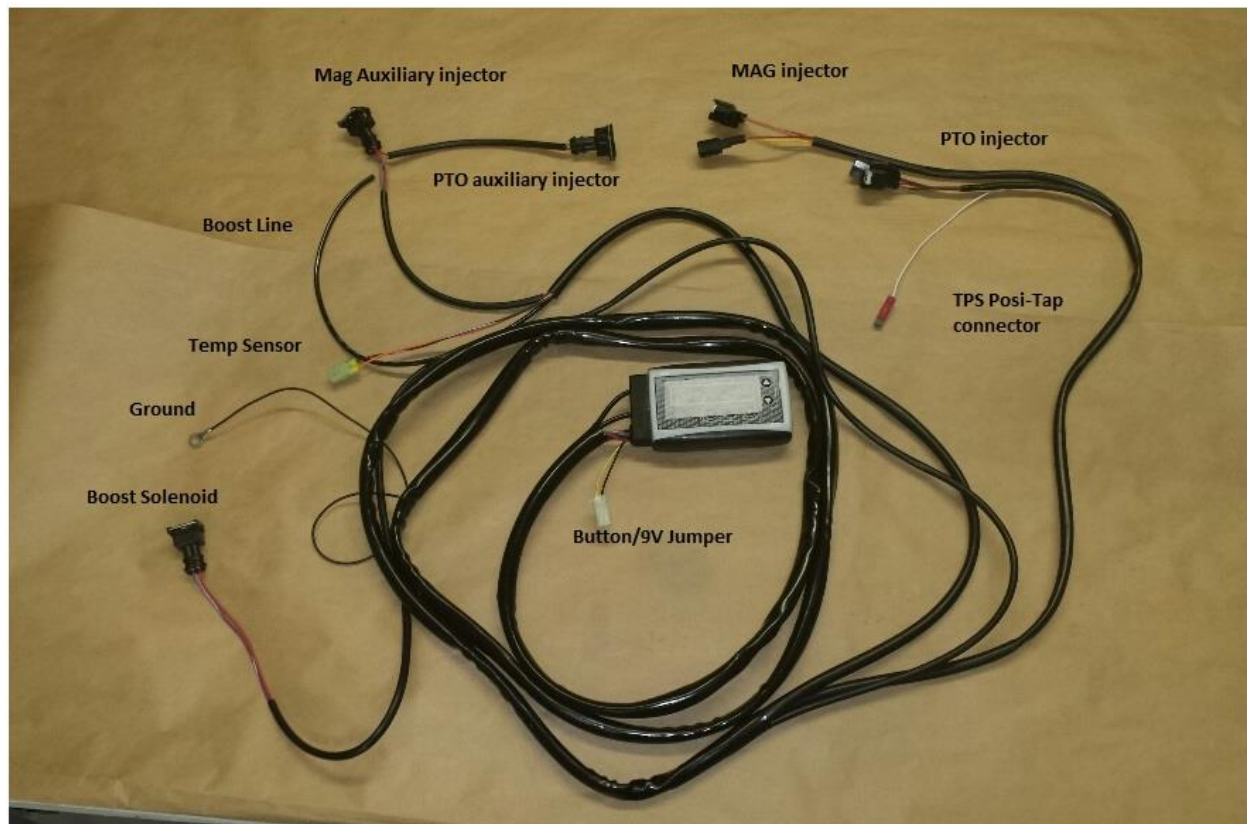
Kit Contents:

Quality check by:

- | | |
|--|--------------------------|
| ___ 1 Control Box | ___ 1 Posi-Tap connector |
| ___ 1 battery connector | ___ 1 Boost Solenoid |
| ___ 5 8" Zip Ties | ___ 36" 3/16 hose |
| ___ 5 4" Zip Ties | |
| ___ 1 5/32 Push to connect fitting (Installed on intercooler with Turbo Kit) | |
| ___ 1 Temp Sensor (Installed on intercooler with Turbo Kit) | |

Make sure wires are routed and zip tied away from moving parts and heat sources.

Connector Index





RZR 1000 Control Box Installation

Control box Routing



After removing side panel route wires through the hole underneath the dash behind the steering wheel.



Route the harness alongside of the frame and turn in toward the clutch and follow the stock wire harness over the clutch cover to the back of the machine.

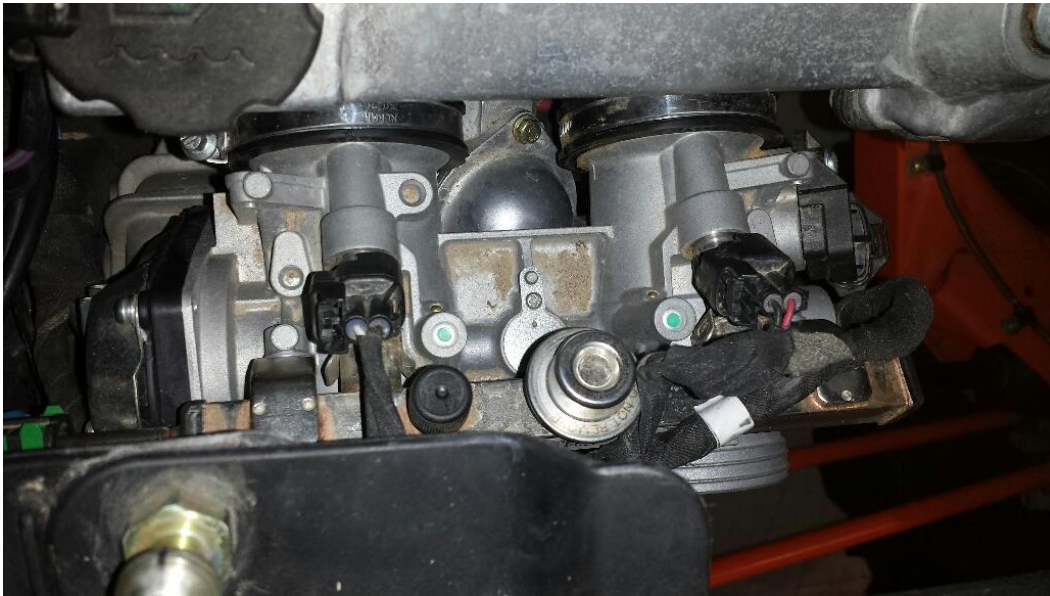
A good ground location is underneath the Driver's seat. Grind the paint off at this location and install the ground.





RZR 1000 Control Box Installation

EFI System



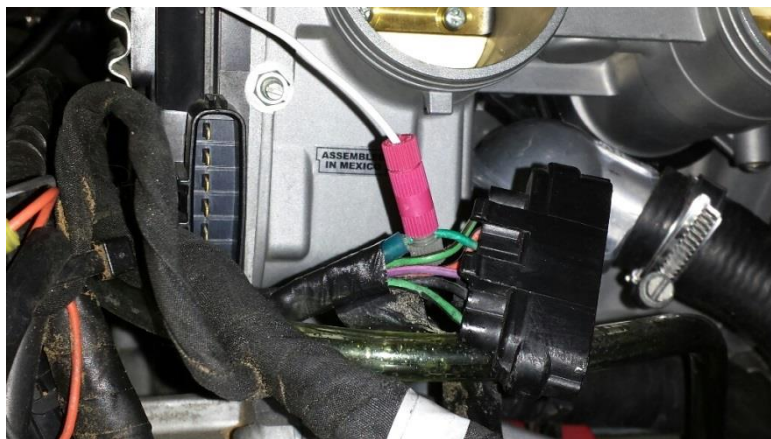
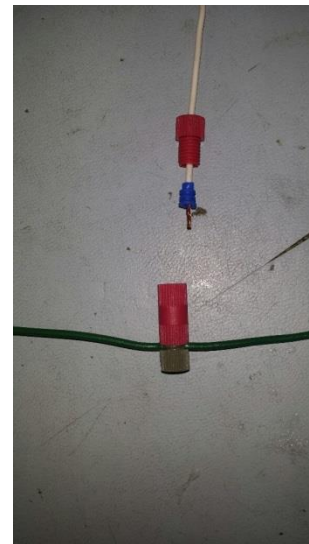
Install Boondocker box in-between factory harness and injectors. The MAG injector (on right) corresponds with the Yellow and Tan wire on the Boondocker harness. The PTO injector (on left) corresponds with the Green and Brown wire on the Boondocker harness.



RZR 1000 Control Box Installation

TPS installation

1. Locate the Throttle Position Sensor Connector.
2. It is a 6 position connector located on the Clutch side of the Throttle Body.
3. The Posi-Tap connector will come pre-installed with a seal on the white wire.
4. Before tapping into the wire twist Posi-Tap connector 5 times clockwise. This will make the wire end up straight when finished.
5. Tap the White wire to the Green Wire in position 3 on the TPS connector.



To make sure this is installed properly, when able to start the engine, go to the Stats screen and view the TPS in the lower center of the screen. You should notice a change when the pedal is pressed.

Run	05s	00 _A	0.0
2100	tps34		79 _F °



RZR 1000 Control Box Installation

Auxiliary Injectors



Attach Aux Inj 1 (Violet wire) to MAG injector

Attach Aux Inj 2 (Grey wire) to PTO injector

Temp Sensor



Boost Reference





RZR 1000 Control Box Installation

Boost Solenoid Installation

Install the boost solenoid in a pressure line between the air box (or charge tube) and wastegate actuator. Attach the metal port of the solenoid with a 3/16" hose to the air box (or charge tube) fitting (see the figure below). Connect the right-angle port of the solenoid with a 3/16" hose to the wastegate actuator. Attach a short length of hose to the third port and point it downward so that it won't get water in it. This is the actuator vent hose. Attach the solenoid so that it is supported. Use small zip ties to secure the hoses to the ports.

